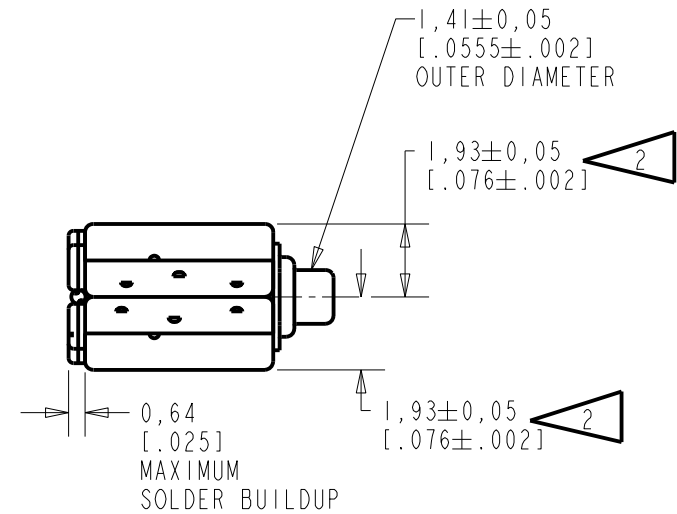
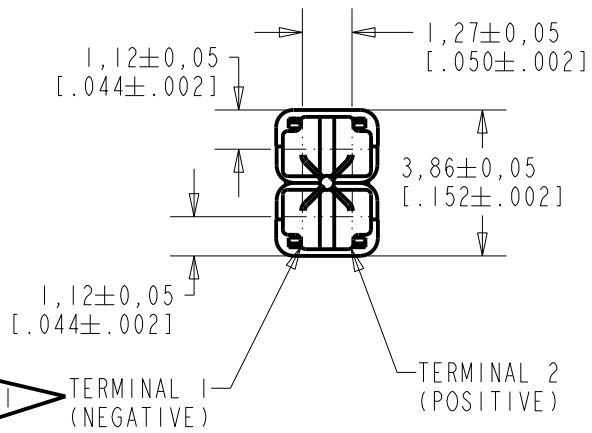
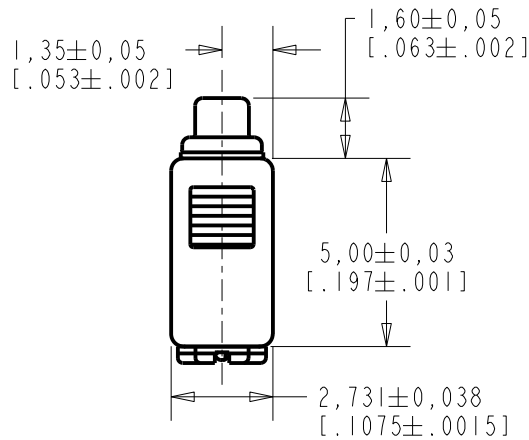


**SWFK-32625-000**

**SHT 1.1**

NOTES:

- 1 A POSITIVE GOING VOLTAGE AT TERMINAL 2, RELATIVE TO TERMINAL 1, CAUSES A DECREASE IN PRESSURE AT THE SOUND OUTLET.
- 2 LOCATED FROM TWO SURFACES FOR CUSTOMER CONVENIENCE. ONLY APPLICABLE FROM ONE SURFACE, NOT TO BE USED TOGETHER.



SCALE 2:1  
 NOMINAL WEIGHT 0.19 GRAMS  
 DIMENSIONS IN MILLIMETERS [INCHES]

**KNOWLES ELECTRONICS**  
 ITASCA, ILLINOIS U.S.A.

Revision	C.O. #	Implementation Date	RELEASE LEVEL	REVISION
A	PI0000099	11/5/15	<b>Active</b>	<b>A</b>

SCALE: 5:1		DR. BY: NANC	DATE: 11/5/15
DO NOT SCALE DRAWING		CK. BY: GJP	DATE: 11/5/15
TITLE: RECEIVER		SWFK-32625-000	
OUTLINE DRAWING		SHT 1.1	
		APP. BY: GJP	DATE: 11/5/15

A PAIR OF MAGNETIC BALANCED ARMATURE RECEIVERS WITH TAPERED REED INTENDED FOR USE AS THE HIGH FREQUENCY DRIVER IN A HI-FI SYSTEM.

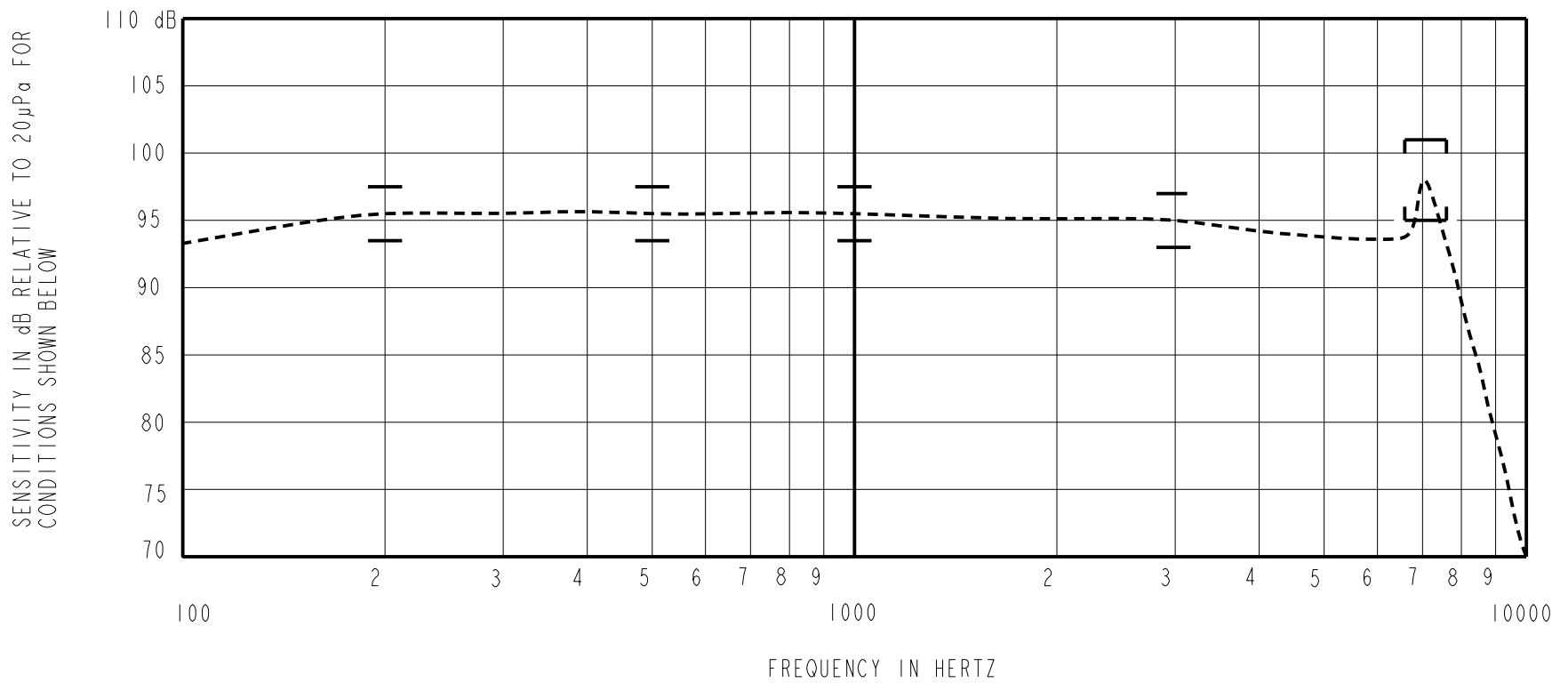
4.7kOhms SCREEN DAMPING

SWFK-32625-000

SHEET 2.1

NOTE: SPECIFICATIONS FOLLOWED BY AN ASTERISK (\*) ARE 100% TESTED.

CONSTANT VOLTAGE CONDITIONS



### ACOUSTICAL

SENSITIVITY\*  
 DEVICE WILL PRODUCE THE SPL LISTED BELOW UNDER TEST CONDITION IN TABLE 3.  
 NOMINAL SENSITIVITY AT 1kHz IS dB RELATIVE TO 20 µPa. ALL OTHER VALUES  
 IN dB RELATIVE TO THE SENSITIVITY AT 1kHz.

FREQUENCY (Hz)	MINIMUM	NOMINAL	MAXIMUM
200	-2.0	0.0	+2.0
500	-2.0	0.0	+2.0
1000	-2.0	95.5	+2.0
3000	-2.5	-0.5	+1.5
6600-7600 PEAK	-0.5	+2.5	+5.5

TABLE 1

TOTAL HARMONIC DISTORTION\*  
 DEVICE WILL NOT EXCEED TOTAL HARMONIC DISTORTION LEVELS LISTED BELOW.

FREQUENCY (Hz)	AC DRIVE (V rms)	DC BIAS (V)	LIMIT (%)
1166	.094	0	5
1750	.094	0	5
1750	.265	0	10

TABLE 2

### TEST CONDITIONS

NOMINAL SOURCE VOLTAGE	.094 V rms, 0 mA DC BIAS
SOURCE IMPEDANCE	<0.2 Ohm
TUBING	10mm [.394"] LONG, 1mm [.039"] I.D.
COUPLER CAVITY	2 CM <sup>3</sup> , SIMULATED ANSI S3.7 TYPE HA-3 (IEC 60318-5)

TABLE 3

### ELECTRICAL

DC RESISTANCE	6.3 Ohms ± 10%*
IMPEDANCE @ 500 Hz	6.6 Ohms ± 20%*
IMPEDANCE @ 1kHz	7.0 Ohms ± 20%*

TABLE 4

ISOLATION: CASE WILL BE ELECTRICALLY ISOLATED FROM THE COIL CIRCUIT.

### MECHANICAL

PORT LOCATION: 12S  
 SOLDER TYPE: SAC305  
 TEMPERATURE  
 OPERATING: SENSITIVITY WILL NOT VARY MORE  
 THAN +1 / -3 dB FROM -17°C TO 63°C.  
 STORAGE: -40°C TO 63°C.

Revision	C.O. #	Implementation Date	RELEASE LEVEL	REVISION
A	PI0000099	11/5/15	Active	A

**KNOWLES ELECTRONICS**  
 ITASCA, ILLINOIS U.S.A.

WHEN TEST LIMITS ARE USED TO ESTABLISH INCOMING INSPECTION ACCEPTANCE/REJECTION CRITERIA, CORRELATION OF TEST EQUIPMENT WITH KNOWLES IS ALSO REQUIRED FOR ELIMINATION OF EQUIPMENT AND TEST METHOD VARIATION

TITLE: **RECEIVER**  
 PERFORMANCE SPECIFICATION

**SWFK-32625-000**  
 SHT 2.1

DR. BY	DATE
NANC	11/5/15
CK. BY	DATE
GJP	11/5/15
APP. BY	DATE
GJP	11/5/15